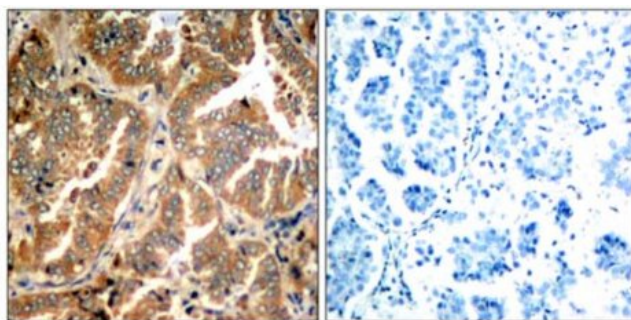
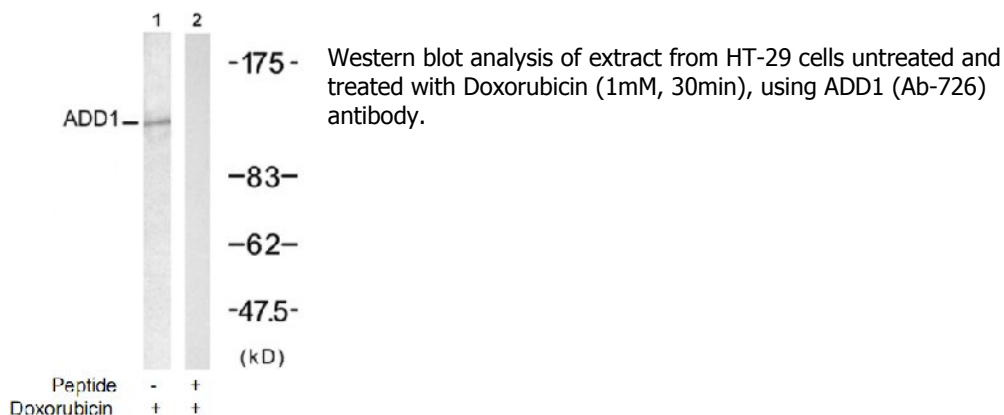


ADD1 (Ab-726) Antibody

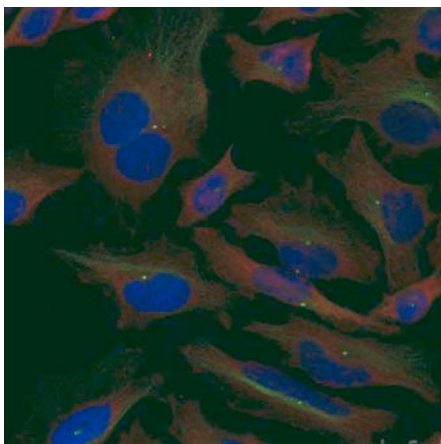
Catalog No.	75623
Product Name	ADD1 (Ab-726) Antibody
Size	50ug, 100ug
Concentration	1 mg/ml
Specificity	Detects endogenous levels of total ADD1 protein.
Reactivity	Human, Mouse, Rat
Immunogen	Synthesized non-phosphopeptide derived from human ADD1 around the phosphorylation site of serine 726 (T-P-S ^P -F-L).
Applications	Western Blot: 1/500 – 1/1000; IHC: 1/50 – 1/100; IF: 1/100 – 1/200
Swiss-Prot No.	P35611 (Human); Q9QYC0 (Mouse); Q63028 (Rat)
Host Species	Rabbit
Clonality	Polyclonal
Isotype	IgG
Storage	-20°C for one year. Avoid freeze / thaw cycles.
Purification	Affinity-purified from rabbit antiserum by affinity-chromatography using epitope-specific immunogen.

Images



Immunohistochemical analysis of paraffin-embedded human lung carcinoma tissue using ADD1 (Ab-726) antibody.

Peptide - +



Immunofluorescence staining of methanol-fixed HeLa cells using ADD1 (Ab-726) antibody

For Research Use Only