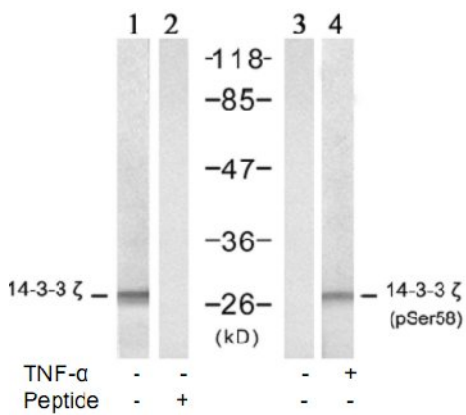


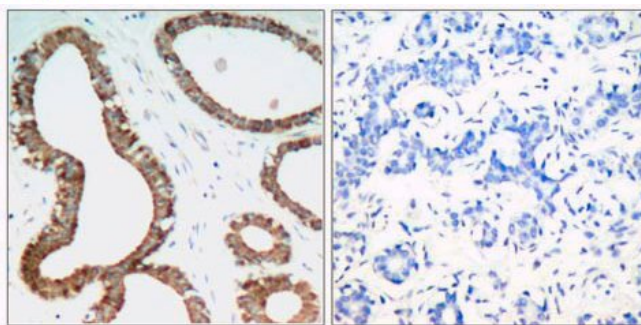
14-3-3 ζ (Ab-58) Antibody

Catalog No. 75622
Product Name 14-3-3 zeta (Ab-58) Antibody
Size 50ug, 100ug
Concentration 1 mg/ml
Specificity Detects endogenous levels of total 14-3-3 ζ protein.
Reactivity Human, Mouse, Rat
Immunogen Synthesized non-phosphopeptide derived from human 14-3-3 ζ around the phosphorylation site of serine 58 (R-S-S^P-W-R).
Applications Western Blot: 1/500 – 1/1000; IHC: 1/50 – 1/100
Entrez Gene No. 7529 (Human); 7534 (Human); 54401 (Mouse); 22631 (Mouse); 56011 (Rat); 25578 (Rat)
Swiss-Prot No. Q9Y649 (Human); P31946 (Human); P63104 (Human); P63101 (Mouse); Q9CQV8 (Mouse); P35213 (Rat); P6310 (Rat)
Host Species Rabbit
Clonality Polyclonal
Isotype IgG
Storage -20°C for one year. Avoid freeze / thaw cycles.
Purification Affinity-purified from rabbit antiserum by affinity-chromatography using epitope-specific immunogen.

Images



Western blot analysis of extract from NIH/3T3 cells, untreated and treated with TNF-α (20ng/ml, 5min), using 14-3-3 ζ (Ab-58) antibody (lane 1 and 2) and 14-3-3 ζ (Phospho-Ser58) antibody (lane 3 and 4).



Immunohistochemical analysis of paraffin-embedded human breast carcinoma tissue, using 14-3-3 ζ (Ab-58) antibody. Left: Peptide - Right: Peptide +

For Research Use Only