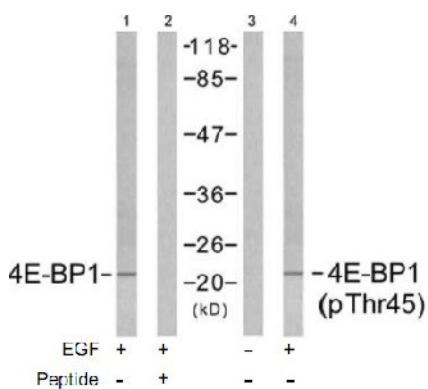


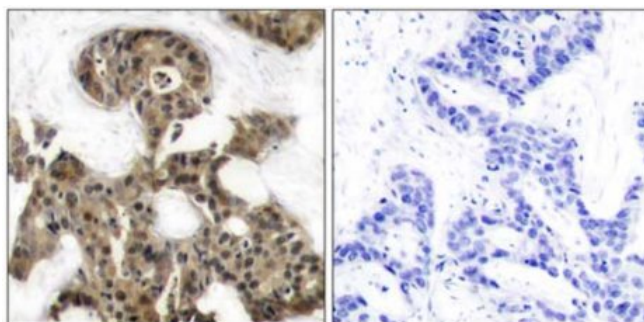
4E-BP1 (Ab-45) Antibody

Catalog No. 75537
Product Name 4E-BP1 (Ab-45) Antibody
Size 50ug, 100ug
Concentration 1 mg/ml
Specificity Detects endogenous levels of total 4E-BP1 protein. This antibody may cross-react with 4E-BP2 and 4E-BP3.
Reactivity Human, Mouse, Rat
Immunogen Synthesized non-phosphopeptide derived from human 4E-BP1 around the phosphorylation site of threonine 45 (S-T-T^P-P-G).
Applications Western Blot: 1/500 – 1/1000; IHC: 1/50 – 1/100
Entrez Gene No. 1978 (Human); 13685 (Mouse); 116636 (Rat)
Swiss-Prot No. Q13541 (Human); Q60876 (Mouse); Q3TII9 (Mouse); Q62622 (Rat)
Host Species Rabbit
Clonality Polyclonal
Isotype IgG
Storage -20°C for one year. Avoid freeze / thaw cycles.
Purification Affinity-purified from rabbit antiserum by affinity-chromatography using epitope-specific immunogen.

Images



Western blot analysis of extracts from MDA-MB-435 cells untreated and treated with EGF (200ng/ml, 5min), using 4E-BP1 (Ab-45) antibody (Lane1 and 2) and 4E-BP1 (phospho-Thr45) antibody (Lane 3 and 4).



Immunohistochemical analysis of paraffin-embedded human breast carcinoma tissue using 4E-BP1 (Ab-45) antibody.

For Research Use Only