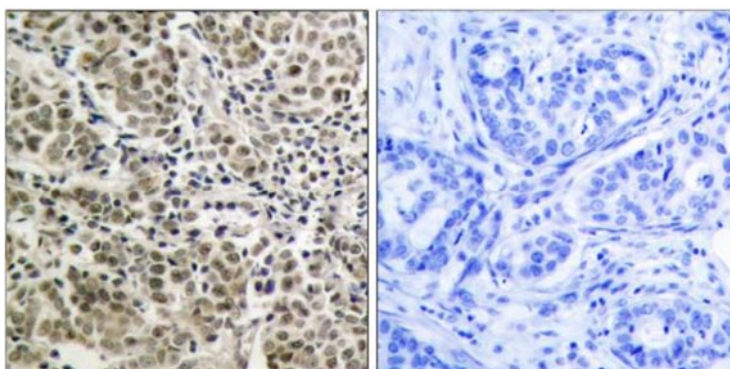


**Androgen Receptor (Ab-650) Antibody**

<b>Catalog No.</b>	75426
<b>Product Name</b>	Androgen Receptor (Ab-650) Antibody
<b>Size</b>	50ug, 100ug
<b>Concentration</b>	1 mg/ml
<b>Specificity</b>	Detects endogenous levels of total androgen receptor protein.
<b>Reactivity</b>	Human, Mouse
<b>Immunogen</b>	Synthesized non-phosphopeptide derived from human androgen receptor around the phosphorylation site of serine 650 (T-T-S <sup>P</sup> -P-T).
<b>Applications</b>	IHC: 1/50 – 1/100
<b>Swiss-Prot No.</b>	P10275 (Human)
<b>Host Species</b>	Rabbit
<b>Clonality</b>	Polyclonal
<b>Isotype</b>	IgG
<b>Storage</b>	-20°C for one year. Avoid freeze / thaw cycles.
<b>Purification</b>	Affinity-purified from rabbit antiserum by affinity-chromatography using epitope-specific immunogen.

**Images**

Immunohistochemical analysis of paraffin-embedded human prostate carcinoma tissue using Androgen Receptor (Ab-650) antibody.

Left: peptide –  
Right: peptide +

**For Research Use Only**