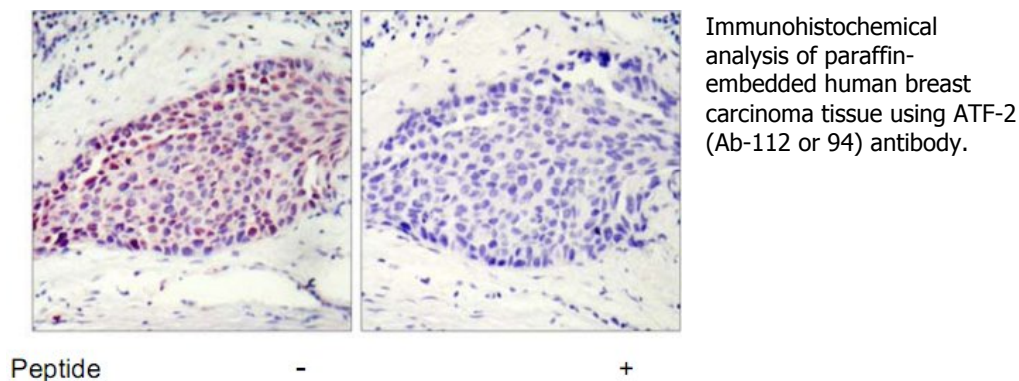
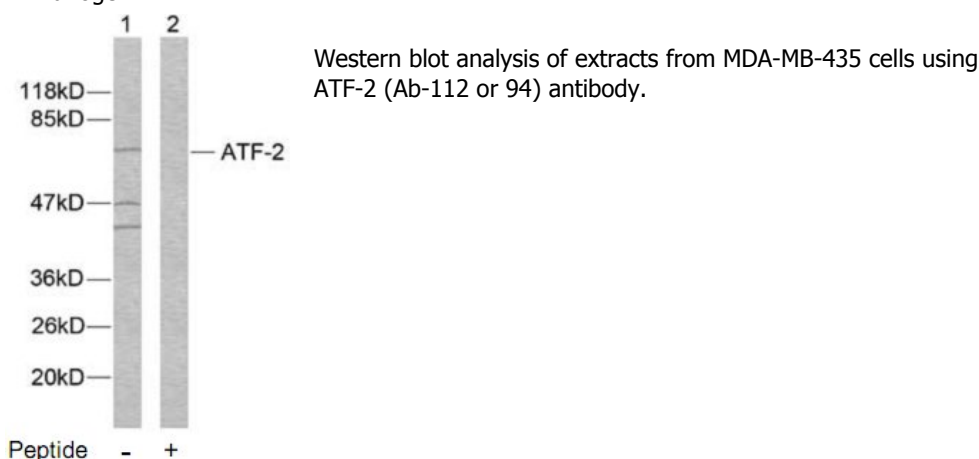


**ATF-2 (Ab-112 or 94) Antibody**

**Catalog No.** 75354  
**Product Name** ATF-2 (Ab-112 or 94) Antibody  
**Size** 50ug, 100ug  
**Concentration** 1 mg/ml  
**Specificity** Detects endogenous levels of total ATF-2 protein.  
**Reactivity** Human, Mouse, Rat  
**Immunogen** Synthesized phosphopeptide derived from human ATF-2 around the phosphorylation site of serine 112 or 94 (D-L-S<sup>P</sup>-P-L).  
**Applications** WB: 1/500 – 1/1000; IHC: 1/50 – 1/100  
**Swiss-Prot No.** P15336 (Human); P16951 (Mouse); Q00969 (Rat)  
**Host Species** Rabbit  
**Clonality** Polyclonal  
**Isotype** IgG  
**Storage** -20°C for one year. Avoid freeze / thaw cycles.  
**Purification** Affinity-purified from rabbit antiserum by affinity-chromatography using epitope-specific immunogen.

**Images**



**For Research Use Only**