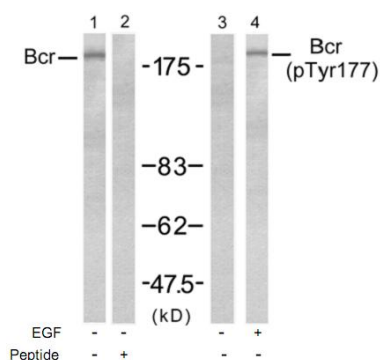


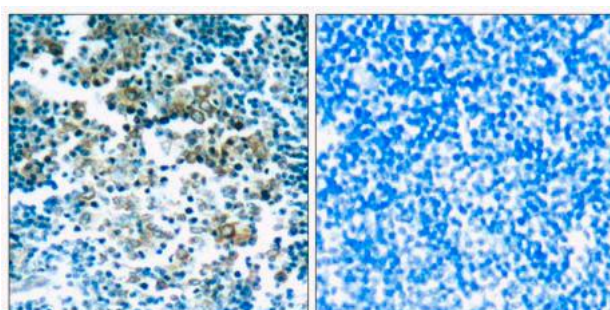
**Bcr (Phospho-Tyr177) Antibody**

<b>Catalog No.</b>	65520
<b>Product Name</b>	Bcr (Phospho-Tyr177) Antibody
<b>Size</b>	50ug, 100ug
<b>Concentration</b>	1 mg/ml
<b>Specificity</b>	Detects endogenous levels of Bcr only when phosphorylated at tyrosine 177.
<b>Reactivity</b>	Human, Mouse
<b>Immunogen</b>	Synthesized phosphopeptide derived from human Bcr around the phosphorylation site of tyrosine 177 (P-F-Y <sup>P</sup> -V-N).
<b>Applications</b>	Western Blot: 1/500 – 1/1000; IHC: 1/50 – 1/100
<b>Entrez Gene No.</b>	613 (Human); 110279 (Mouse)
<b>Swiss-Prot No.</b>	P11274 (Human)
<b>Host Species</b>	Rabbit
<b>Clonality</b>	Polyclonal
<b>Isotype</b>	IgG
<b>Buffer</b>	Phosphate buffered saline (without Mg <sup>2+</sup> and Ca <sup>2+</sup> ), pH 7.4, 150mM NaCl, 0.02% sodium azide and 50% glycerol.
<b>Storage</b>	-20°C for one year. Avoid freeze / thaw cycles.
<b>Purification</b>	Affinity purified from rabbit antiserum by affinity chromatography using epitope specific phosphopeptide. The antibody against non phosphopeptide was removed by chromatography using non phosphopeptide corresponding to the phosphorylation site.

**Images**



Western blot analysis of extract from A431 cells, untreated or treated with EGF (200ng/ml, 5min), using Bcr (Ab-177) antibody (Lane 1 and 2) and Bcr (phospho-Tyr177) antibody (Lane 3 and 4).



Immunohistochemical analysis of paraffin-embedded human tonsil tumor tissue, using Bcr (phospho-Tyr177) antibody. Left: P-Peptide – Right: P-Peptide +

**For Research Use Only**