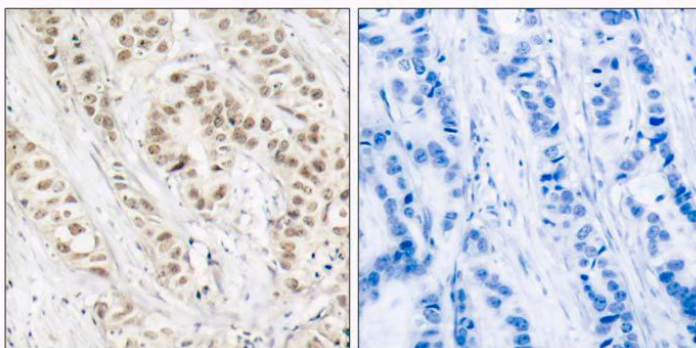


BRCA1 (Phospho-Ser1524) Antibody

Catalog No.	65438
Product Name	BRCA1 (Phospho-Ser1524) Antibody
Size	50ug, 100ug
Concentration	1 mg/ml
Specificity	Detects endogenous levels of BRCA1 only when phosphorylated at serine 1524.
Reactivity	Human
Immunogen	Synthesized phosphopeptide derived from human BRCA1 around the phosphorylation site of serine 1524 (Y-P-S ^P -Q-E).
Applications	Western Blot: 1/500 – 1/1000; IHC: 1/50 – 1/100
Entrez Gene No.	672 (Human)
Swiss-Prot No.	P38398 (Human)
Host Species	Rabbit
Clonality	Polyclonal
Isotype	IgG
Buffer	Phosphate buffered saline (without Mg ²⁺ and Ca ²⁺), pH 7.4, 150mM NaCl, 0.02% sodium azide and 50% glycerol.
Storage	-20°C for one year. Avoid freeze / thaw cycles.
Purification	Affinity-purified from rabbit antiserum by affinity-chromatography using epitope-specific phosphopeptide. The antibody against non-phosphopeptide was removed by chromatography using non-phosphopeptide corresponding to the phosphorylation site.

Images

Immunohistochemical analysis of paraffin-embedded human breast carcinoma tissue, using BRCA1 (phospho-Ser1524) antibody.

Left: P-Peptide –

Right: P-Peptide +

For Research Use Only