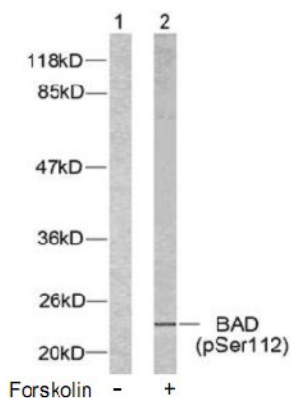
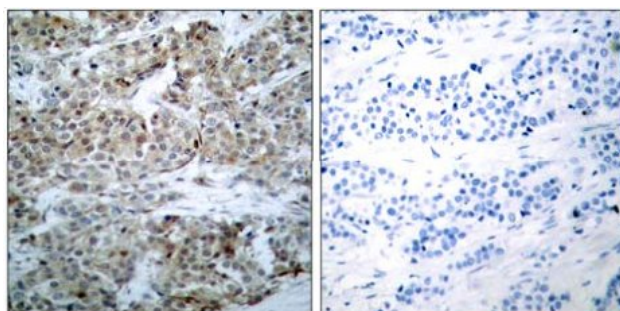


BAD (Phospho-Ser112) Antibody

Catalog No.	65388
Product Name	BAD (Phospho-Ser112) Antibody
Size	50ug, 100ug
Concentration	1 mg/ml
Specificity	Detects endogenous levels of BAD only when phosphorylated at Serine 112.
Reactivity	Human, Mouse, Rat
Immunogen	Synthesized phosphopeptide derived from mouse BAD around the phosphorylation site of serine112 (H-S-S ^P -Y-P).
Applications	WB: 1/500 – 1/2000; IHC: 1/50 – 1/100
Swiss-Prot No.	Q92934 (Human), Q61337 (Mouse), O35147 (Rat)
Host Species	Rabbit
Clonality	Polyclonal
Isotype	IgG
Storage	-20°C for one year. Avoid freeze / thaw cycles.
Purification	Affinity-purified from rabbit antiserum by affinity-chromatography using epitope-specific phosphopeptide. The antibody against non-phosphopeptide was removed by chromatography using non-phosphopeptide corresponding to the phosphorylation site.

Images

Western blot analysis of extracts from 293 cells using BAD (phospho-Ser112) antibody.



Immunohistochemical analysis of paraffin-embedded human breast carcinoma tissue using BAD (phospho-Ser112) antibody.

P-Peptide - +

For Research Use Only

Full Moon BioSystems, Inc.

754 N. Pastoria Avenue • Sunnyvale, CA 94085

Phone: 408.737.1702 • Toll Free: 877.316.7308 • Fax: 408.732.7230 • www.fullmoonbiosystems.com