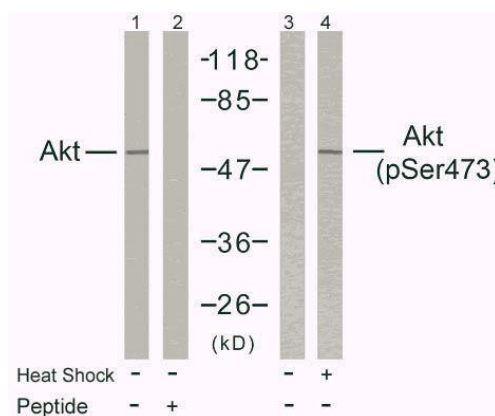


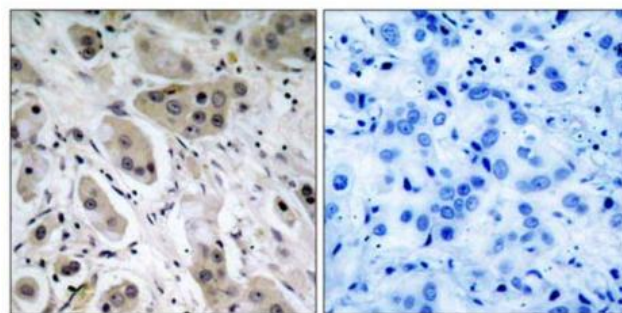
**Akt (Phospho-Ser473) Antibody**

**Catalog No.** 65375  
**Product Name** Akt (Phospho-Ser473) Antibody  
**Size** 50ug, 100ug  
**Concentration** 1 mg/ml  
**Specificity** Detects endogenous levels of Akt only when phosphorylated at serine 473.  
**Reactivity** Human, Mouse, Rat  
**Immunogen** Synthesized phosphopeptide derived from human Akt around the phosphorylation site of serine 473 (Q-F-S<sup>P</sup>-Y-S).  
**Tested Applications** WB: 1/500 – 1/1000; IHC: 1/50 – 1/1000; ELISA  
**Entrez Gene No.** 207 (Human); 11651 (Mouse); 24185 (Rat)  
**Swiss-Prot No.** P31749 (Human); P31750 (Mouse); P47196 (Rat)  
**Host Species** Rabbit  
**Clonality** Polyclonal  
**Isotype** IgG  
**Storage** -20°C for one year. Avoid freeze/thaw cycles.  
**Purification** Affinity-purified from rabbit antiserum by affinity-chromatography using epitope-specific phosphopeptide. The antibody against non-phosphopeptide was removed by chromatography using non-phosphopeptide corresponding to the phosphorylation site.

**Images**



Western blot analysis of extract from HeLa cells untreated and treated with heat shock using Akt (Ab-473) antibody (Lane 1 and 2) and Akt (phospho-Ser473) antibody (Lane 3 and 4).



P-Peptide                      -                      +

Immunohistochemical analysis of paraffin-embedded human breast carcinoma tissue, using Akt (phospho-Ser473) antibody.

**For Research Use Only**